



May 2020

Issue 1

First Edition of Watling Academy Newsletter 'BUILD SPECIAL'

Welcome from Mr Bacon Head of School

A warm welcome to Watling Academy and the very first edition of the newsletter for our brand new community. Our 'Build Special' will provide you with updates on both Fairfields and the Main Build, which I am pleased to tell you are both on track despite the current difficulties we all face.

From the first photos in September 2019 of the ground breaking ceremony to photos taken this month we have come a very long way!



It seems a long time ago since I met so many of you at the Watling Academy Open Evening in October last year. During the subsequent seven months so much has happened both in terms of the Academy development but also the way we live, work and learn and very soon, the ways in which our children experience school.

I would like to reassure you that amongst all the challenges COVID-19 is presenting we are still working hard to ensure that Watling Academy delivers on the commitments I made to you back at that Open Evening - the highest standards of 'Education, Care and Opportunity' for your children, underpinned by core values of Respect, Responsibility and Kindness.

Of course, as you would expect, we are planning for a number of different scenarios of what the structure and arrangements for school might look like in September but for now are keeping up to date with Government and Local Authority guidance and keeping our fingers crossed that we will be as near to 'normal' as possible.

With all good wishes to our new Watling community.

Mr I Bacon
Head of School



New Facilities Update Fairfields Academy

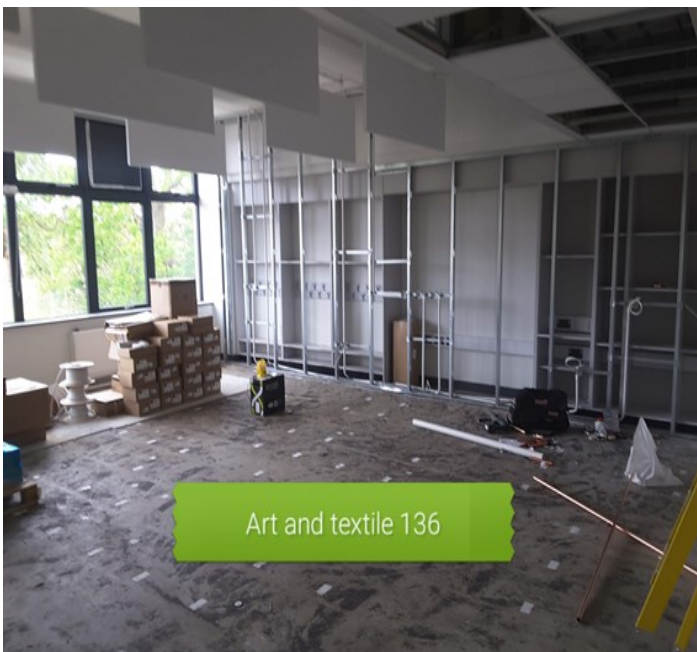


As you will recall, we stipulated that a condition of utilising Fairfields Primary School as our temporary accommodation was that appropriate renovations would take place on the upper floor to ensure we have the facilities for delivering a secondary curriculum. This includes science labs, a food room and a fully equipped IT suite.

The renovations programme at Fairfields is currently running on schedule and we are still on track to move in during August, which will give us plenty of time to set up ready for opening in September. The food room is well on the way to completion and the work on the science labs and IT suite is underway.

I would like to thank the Milton Keynes Council /Project Management team and the contractors, Willmott Dixon for working hard to ensure the programme remains on track at this time.

Our Leadership team is working closely with the Leadership team at Fairfields to plan carefully our approach to working together and we have begun discussions around how we can ensure that all pupils, staff, parents and visitors remain safe whilst in school given the current challenges posed by COVID-19.



Build Update

Barossa Way, Whitehouse



You will see from the photos the great progress of the main build on our site at Barossa Way in Whitehouse. Despite the challenges faced by continuing construction during the coronavirus pandemic Grahams, the contractors, have continued to make good progress, whilst adhering to the government guidelines with safety measures in place. Through clever alterations to their build programme the main build is still on track to be ready for us to move into in the Spring of 2021.

The structure of the main building is now complete and the vast majority of the works are now internal. Partition walls, windows and staircases are all installed and electrics and other utilities are also now in place. The building is nearly watertight and the detailed work on individual rooms and specialist areas has begun.

The Sports complex is structurally complete with the Sports Hall, Activities studios and changing rooms well on the way.

Outside, our multi-use games areas (MUGAs) are fully installed and a huge amount of groundwork has begun to prepare the pitches and the 3G facility. At the front of the school the car park is almost finished and is now in use for staff and visitors to the site.

I hope to be able to arrange tours for the new Year 7 students in September and we are planning for an opportunity for parents and carers to visit the new build nearer the time of our move.

I am grateful for the hard work and flexibility of Milton Keynes Council/Project Management team and those at Grahams to maintain the momentum with the main build over the last few months.



May 2020

Issue 1

Dates for your Diary:

Deadline for 'Name that House' and 'Design your Postcard' Competitions
Friday 5th June 12pm

New Intake Parents Evening
Tuesday 30th June (tbc)

Year 7 Induction Activities w/b Monday 6th July

INSET Days
Thursday and Friday
3rd and 4th September

First day of Autumn term
Monday 7th September

School Photos
Friday 11th September

Whole School trip (tbc)
Friday 18th September

Year 7 Tutor Consultation Evening
Wednesday 30th September

OFSTED News!

At the beginning of May we had a 'virtual visit' from OFSTED who undertook a full inspection of our plans for opening the Academy. This is normal for any brand new school but was an interesting process to experience via online and telephone meetings. The feedback from OFSTED was very strong and the Inspector even commented that she would love to come and work at such a vibrant and exciting Academy!!

Communication

By now, all parents and carers should have received a number of email communications from me welcoming you to Watling Academy, outlining the uniform expectations, answering a set of FAQs submitted by you and requesting return of student details. If you have not received any of those communications then please email us at admin@watling.academy

You will receive further communications from me over the coming weeks regarding arrangements for Student Induction, New Parents Information and starting at the Academy in September. In the meantime I sincerely hope that you and your loved ones stay safe and well.

Coronavirus (COVID-19)

During these unprecedented times look after yourselves and others by adhering to the Government guidance. Advice is available on protection measures, employment and financial support, education, travel and public services.

Together we can make a difference. Follow the guidance, support each other and take care.

The latest advice and information can be found here:
<https://www.gov.uk/coronavirus>.

Watling Academy c/o Denbigh School, Burchard Crescent, Shenley Church End, Milton Keynes, Bucks, MK5 6EX.
Contact us at admin@watling.academy or on 01908 330518.



RESPECT, RESPONSIBILITY and KINDNESS