



WATLING
— ACADEMY —

Year 7

Learning Pathways Evening

Welcome



Headteacher Mrs Fry



Year 7 Pastoral Team



Head of Year- Mr Simmonds

Form Tutors-

- 7NSN- Miss Simpson
- 7TSY- Ms Swaby
- 7CNO- Mr Nwamuo
- 7JCS- Miss Clayton-Gibbons
- 7FSH- Miss Shah
- 7JMM- Ms Malcolm
- 7LBY- Miss Barrett-Parry
- 7MJY- Miss Jeffery
- 7RST- Mr Scott
- 7UTN- Ms Thompson
- 7RTA- Miss Tagumigwa
- 7MBN- Mrs Boddington

Year 7 Pastoral Team



Mr Gibbs- Assistant Head Teacher link

Mrs Middleton- Year 7 Pastoral Assistant

SENDCO- Mrs Bennett

Assistant SENDO- Miss Okutu

Counsellor- Mrs Lawson

First aid- Mrs Ford / Ms Carpenter



Form tutor- Role



- Ensuring no student is anonymous at Watling Academy.
- Fostering strong relationships with both students and parents, ensuring a holistic approach to each child's education.
- Students meet their Form Tutor daily at 8:40 am, allowing for consistent support and guidance.
- If students have any concerns or issues, they are encouraged to speak with their Form Tutor to ensure timely support.
- Leading wellbeing lessons
- **The Form Tutor is the first point of contact for parents to discuss any concerns or questions.**



Planner

- Home school agreement
- Policies
- Passwords
- Student notes
- Subject Support
- Timetable
- School / Home Communication

School-Home Communication Sheet

Comment

Teacher's Signature _____ Date _____

Parent's Signature _____ Date _____

Comment

Teacher's Signature _____ Date _____

Parent's Signature _____ Date _____

30



Tutorial Programme



Assemblies Assemblies are themed school meetings that happen every other week for each year group.	Celebration assemblies These take place once a half term and recognise achievements of students both academically and pastorally
Math Matters Students complete a set of Maths challenges set by the Maths department. Supporting what they have been learning in lessons	Notices An update of useful information and key messages.
Word of the Week Key words are defined, the morphology of the word examined and the contexts of the word explored.	Tutorials Introduction The tutorials are weekly PSHE-based lessons with subject-related themes.
House Challenges House Challenges are an exciting opportunity to earn house points.	STEM Challenges STEM skills are in high demand; students participate in a series of challenges that further develop their understanding of Science, Technology, Engineering and Maths



Rewards

We have 3 academy rules- these form part of our everyday language with students, especially when issuing praise or a consequence, we are **respectful**, **responsible** and we are **kind**.

To recognise achievement-

- House Points
- Postcards / Letters home
- Reward Assemblies
- Bronze / Silver / Gold / Platinum badges



Corrections

- **Step 1:** A reminder is given to help students correct their behaviour.
- **Step 2:** If behaviour continues, a W1 (Warning 1) is issued and logged on Class Charts.
- **Step 3:** Continued disruption leads to a W2 (Warning 2) and 2 behaviour points are logged on ClassCharts.
- **Step 4:** If behaviour persists, a W3 (Warning 3) is issued, and a senior staff member intervenes. The student may be re-located to the Reflection and Inclusion room (R&I). 3 behaviour points are logged on ClassCharts.



Sanctions

We actively look for ways to avoid sanctioning students. Where sanctions are necessary, students may receive one or more of the following:

- Late to school = same day AM break detention
- Persistent lateness to lessons = Head of Year detention
- Head of Year = 30 minutes after school detention (Tuesday)
- SLT = 1 hour after school detention (Friday)

Uniform



'At Watling we firmly believe that the wearing of the Academy uniform helps to instil pride, supports positive behaviour and encourages students to identify with the Academy and its ethos'.

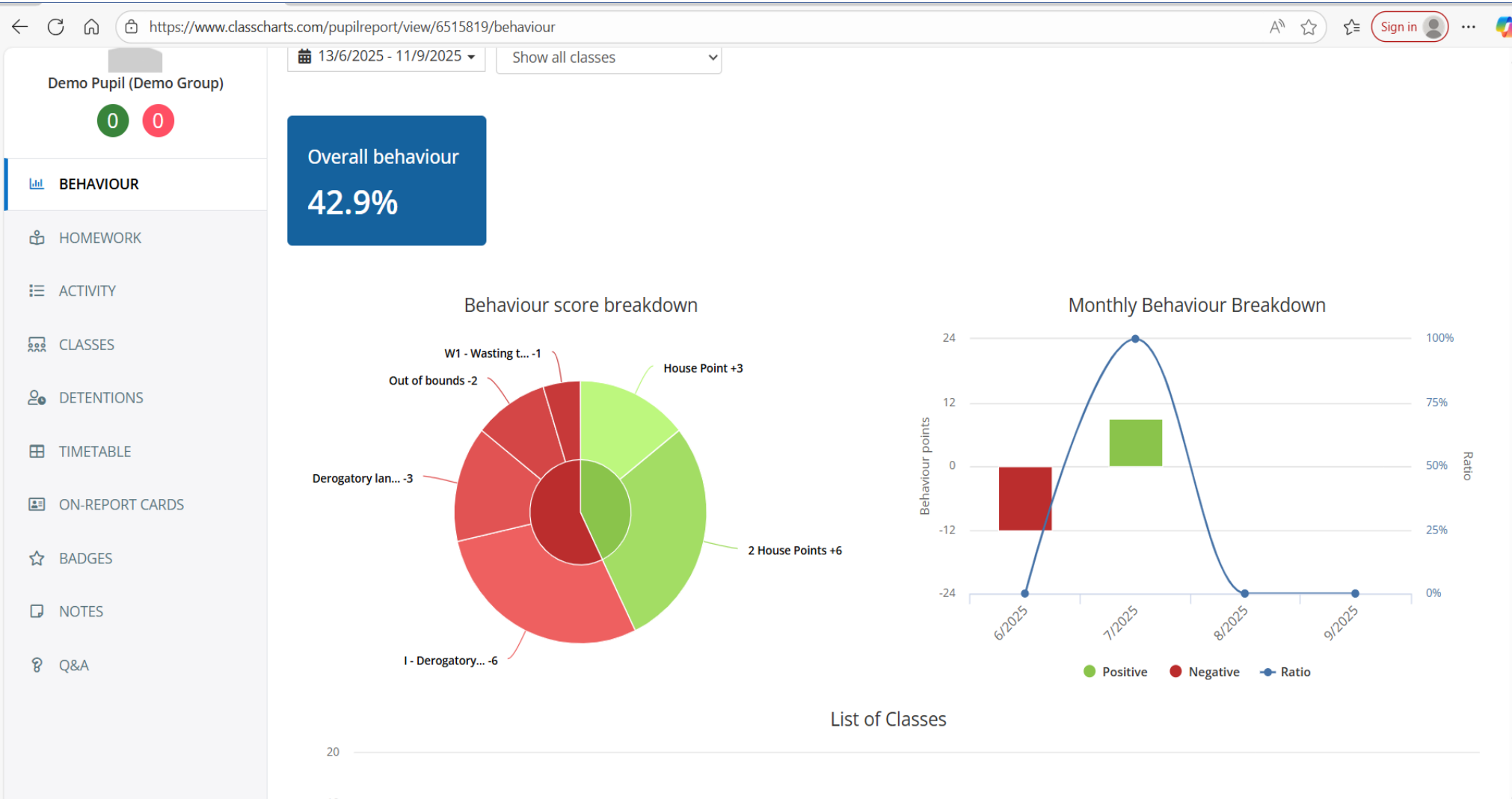


Shoe Clarification



No White Socks or sport brands shoes. Eg top left

Class Charts



Attendance / Punctuality

How can you support?

- Ensure your child is punctual to school every day.
- Keep us informed of any absence and the reason.
- Ensure you avoid term time holidays for your family.
- When possible, book medical/dental appointments outside of school time.
- Liaise with Form tutor and Pastoral team should you need support with raising your child's attendance.

Attendance / Punctuality



Impact of missed Education

	90%	95%	100%
Cumulative loss of Education	= Half a year of school over 5 years	= Quarter of a school year over 5 years	=No loss of Education

Curriculum

- Broad and balanced curriculum.
- Ambitious by design
- Developing effective independent learners
- Our curriculum is supported by three key themes:

- ☐ Milton Keynes
- ☐ STEM
- ☐ Sustainability

Emotional

- Questioning
- Thinking
- Resilience
- Perseverance
- Noticing (finding evidence)
- Concentrating

Cognitive

- Creating, imagining, innovating
- Risk-taking
- Problem solving
- Making links and applying knowledge
- Analysis and evaluation
- Reasoning and making judgements



HOW DO WE BECOME EFFECTIVE LEARNERS?

Social

- Listening
- Communicating
- Planning and organisation
- Leadership

Reflective

- Planning and organisation
- Self-regulation
- Learning from mistakes
- Research
- Collecting and using data

A brief overview of learning in Science



Science Learning Journey

Key Stage 3 Curriculum End Points and key vocabulary: Science

Year 7



Year 7 Science: Curriculum End
Points and key vocabulary

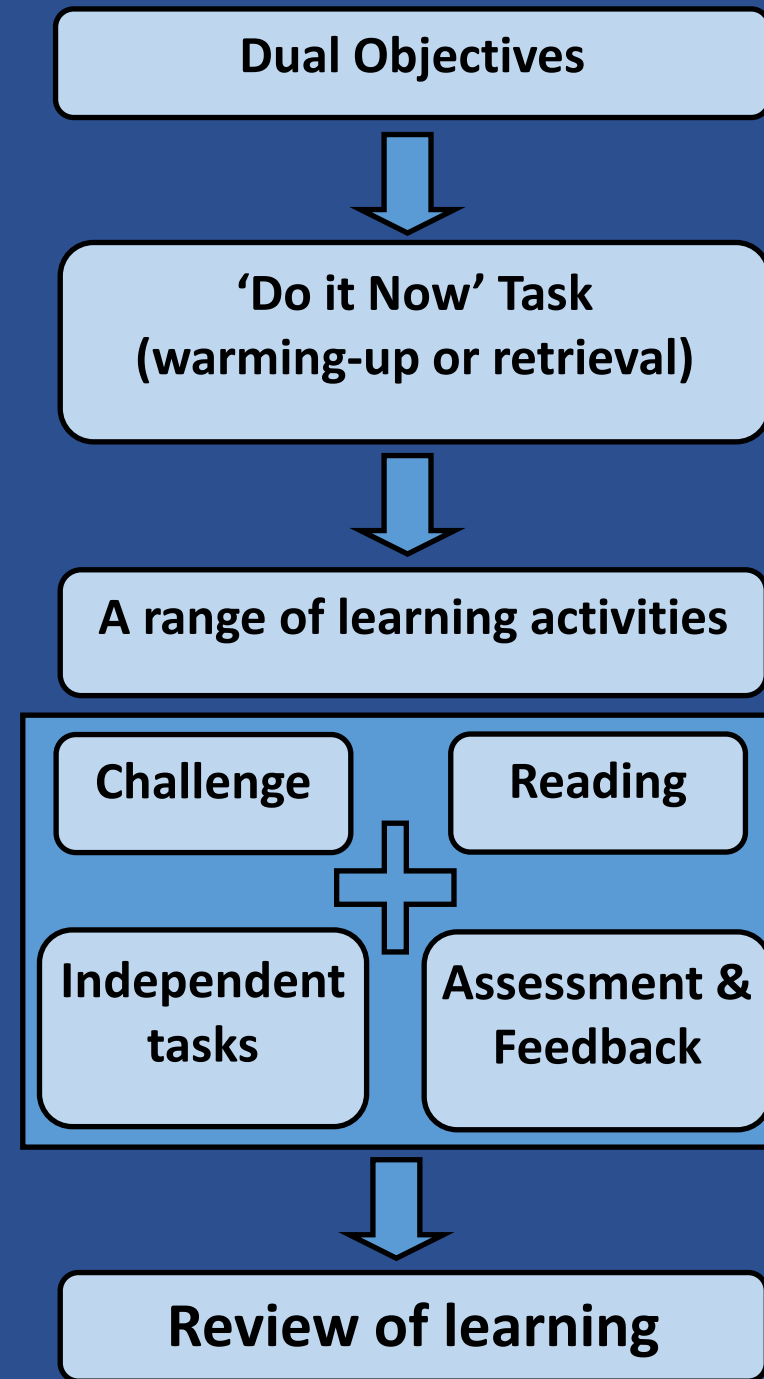
Year 8



Year 8 Science: Curriculum End
Points and key vocabulary

What are lessons like?

- Lessons follow a familiar structure. Starting with a 'do it now' task and ending with a review of the lesson and learning that has taken place.
- All lessons will include a range of activities that have elements of:
 - Challenge
 - Tasks students complete independently
 - Opportunity to develop reading skills
 - Assessment and feedback.



Lesson Expectations

PRESENTATION @ WATLING ACADEMY

P

PEN- Write in **BLUE** or **BLACK** pen for classwork and **RED** pen for DIRT tasks.



R

RULER- UNDERLINE all dates and titles with a ruler. Use a **RULER** to draw graphs and tables.



O

ORGANISE- Write down the **DATE** and **TITLE** for all new work. **STICK** in all worksheets.



U

UNTIDY WORK- NO **GRAFFITI**. Cross out mistakes with one line **THROUGH** the word. **DO NOT SCRIBBLE!**



D

DRAW- use a **PENCIL** to draw all **GRAPHS, DIAGRAMS** or **IMAGES**. Label all graphs and diagrams.

Are you equipped for learning?



Pens

Blue & Black—Student work

Red—Self-Assessment

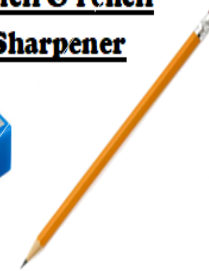
Purple—Peer Assessment



Glue Stick



Pencil & Pencil Sharpener



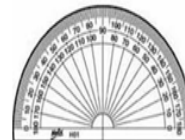
Calculator



Ruler



Compass & Protractor?



Highlighters



Rubber



Exercise Book



Homework

- Homework supports knowledge retention and develops effective independent study skill.
- Homework is set regularly via Class Charts.
- Most homework tasks focus on knowledge retrieval using digital platforms.
- Tasks should take students up to 15-20 minutes to complete
- Support for students within homework clinic.

Time to learn some Mandarin



你好！

nǐ hǎo





你叫什么？

nǐ jiào shén me?

What is your name?

我叫...



wǒ jiào

I am called...



再见

zài jiàn

Goodbye!

你好！



你叫什么？

What is your name?





我叫...

I am called...

再见

Goodbye!

A large yellow star is positioned on the left, with four smaller yellow stars arranged in an arc to its right.

The Mandarin Excellence Programme



MFL at Watling Academy

- At the moment year 7 currently have 1 Spanish and 1 Mandarin lesson per week.
- This means you are learning the three most spoken languages in the world at Watling Academy
- At some point, you will focus on either Spanish or Mandarin in order to dedicate more time to that language and ensure you get the best exam results possible.
- There is the opportunity to do this very soon for some of you with Mandarin.

What is it?

- The Mandarin Excellence programme is a unique yet intensive language programme, started in 2016 that has put more than 16,000 students on track to reach fluency in schools in England.
- It is organised by the UCL Institute of Education in partnership with the British Council.



What is involved?

- 2 lessons of Mandarin per week during your normal school timetable
- 1 additional lesson of Mandarin after school
- Up to 4 hours of independent learning each week
- Regular Assessments in order to allow you to reach HSK Level 4 or 5 standard (around 1,700 characters or 2,500 words).
- Intensive Study Periods away from your normal timetable each academic year
- Possible trip to China in Yr 9

Why should I do this?

- At the end of Year 9 there is a possible trip to China.
- Mandarin is the most spoken language in the world and has been identified as one of the most important languages for the UK's future prosperity.
- If you are a native Spanish speaker at home.
- GCSE results for MEP pupils in summer 2024 show that; 84% of MEP pupils attained grades 5+; 43% attained Grades 8 or 9.
- It is highly likely that you will get better GCSE results in Mandarin and help you reach fluency quicker.
- Analysis found that participation in MEP itself has a positive and statistically significant impact on attainment.
- It will provide you with excellent study skills that will help you in life. Think of it like learning a musical instrument.

What do I need to do if I want to join the programme?

- Your parents will receive a letter about the programme via parentmail later this half-term. They will need to respond to this in order to register your interest.
- Places are limited. So, if the course is oversubscribed, we will look at your attitude to learning in MFL and across the school to decide who would benefit most for the course.
- If you have any questions speak to Miss Zhao (MEP Coordinator) in the canteen after this presentation.

Reading

Did you know?

In the 2025 GCSEs, students had to read the following number of words in their different exams:

- Maths – 6010
- English Literature – 9863
- Geography – 7450
- Music – 2820

Promoting reading is a priority for our students at Watling Academy.

Reading

We do this through:

- Silent reading every morning in tutorial
- Targeted vocabulary sessions in tutorial once a week
- Targeted activities within the curriculum
- Assessing reading skills termly
- Regular library lessons for students in Years 7-9



How can parents support students?

- Talk about reading and the importance of reading skills in your daily life
- Encourage students to read each day or read to your son/daughter regularly
- Join a local library
- Ensure students have a reading book that they enjoy with them every day
- Encourage students to read anything – this could be instructions or recipes.
- Question students on what they are reading at home

Star Reading Assessments



- All students will sit a termly Star Reading Assessment to assess key reading skills including:
 - Vocabulary
 - Comprehension
 - Inference
 - Analysis
- These are online assessments that adapt to individual reading levels
- Students will be given a ZPD level to support them in picking the most appropriate books to support them in progressing in their reading.

Zone of Proximal Development

Too Easy	ZPD: Just Right				Too Hard
2.8	3.2	3.8	4.4	5.0	5.4
					

Students select books according to ZPD and their interests

	0.0 - 1.9
	2.0 - 2.9
	3.0 - 3.9
	4.0 - 4.9
	5.0 - 5.9
	6.0 +

Progress Reports



Progress Reports home to parents three times a year to report of student progress across each term.

- ☐ Autumn Term
- ☐ Spring Term
- ☐ Summer Term

Reporting Engagement, Behaviour, Homework, Current Learning Grade

Currently we are reassessing how publish our progress reports



Clubs

You will soon receive a letter that outlines our club timetable and how to register interest. Please ensure that you complete the online form to register your child's interest prior to the deadline stated on the letter.

Important information:

- Afterschool clubs will run between 3:15pm and 4:15pm.
- Clubs will start the week commencing 22nd of September 2025.
- The completion of the clubs form will provide your child permission to remain onsite until the clubs finish at 4:15pm if they are allocated a club space. Students will be unable to attend clubs without permission from parents/carers.
- All Club allocations will be confirmed via the Homework function in Class Charts.
- Due to high demand, some clubs may need to be divided into groups and distributed through the year. This will allow more students to take part in their chosen activity.

Diary Dates



Academic Mentoring Afternoon
20th November 2025

Subject Consultation
30th April 2026

Academic Mentoring Afternoon
13th July 2026



Thankyou

